


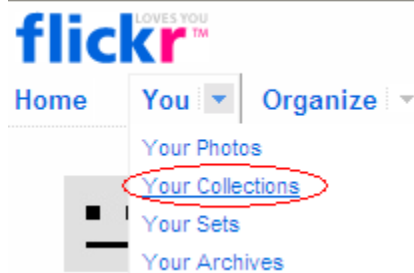
VIEW & DOWNLOAD PHOTOS

1. Enter in your browser of choice.
2. Click on "Sign In" in upper right of page 
3. Enter username and password and click on Sign In

Yahoo! ID:

Password:

4. Click on You > Your Collections



5. Click on any of the collections to browse all the sets.



Races 2007-2008

2 sets | [Edit Mosaic](#)

5. Click on any of the sets to browse the thumbnails



6. Click on any thumbnail....



7. To see and download the various sizes, click on “See different sizes” in lower right corner of the page under Additional Information...

Additional Information

© All rights reserved ([edit](#))

[Place this photo on a map](#)

Taken with a [Nikon D40X](#).

[More properties](#)

Taken on [November 2, 2007](#) ([edit](#))

[See different sizes](#)

Viewed 0 times (Not including you)

8. Click on the desired “Available Size” link i.e. Large, then click on “Download the Large size”...

Available sizes:

[Square](#)
(75 x 75)

[Thumbnail](#)
(100 x 67)

[Small](#)
(240 x 161)

[Medium](#)
(500 x 334)

[Large](#)
(1024 x 685)

[Original](#)
(3872 x 2592)

[Download the Large size](#)

TO UPLOAD PHOTOS

* If you're already logged in go to step 4.

1. Enter in your browser of choice.

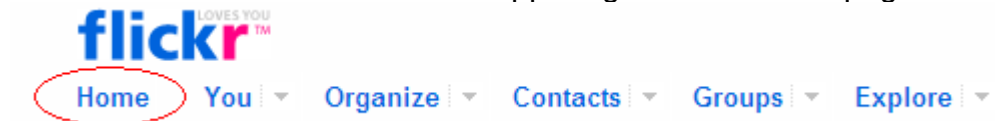
2. Click on "Sign In" in upper right of page 

3. Enter username and password and click on Sign In

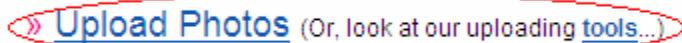


Yahoo! ID:
Password:

4. Click on the "Home" link in the upper right corner of the page...



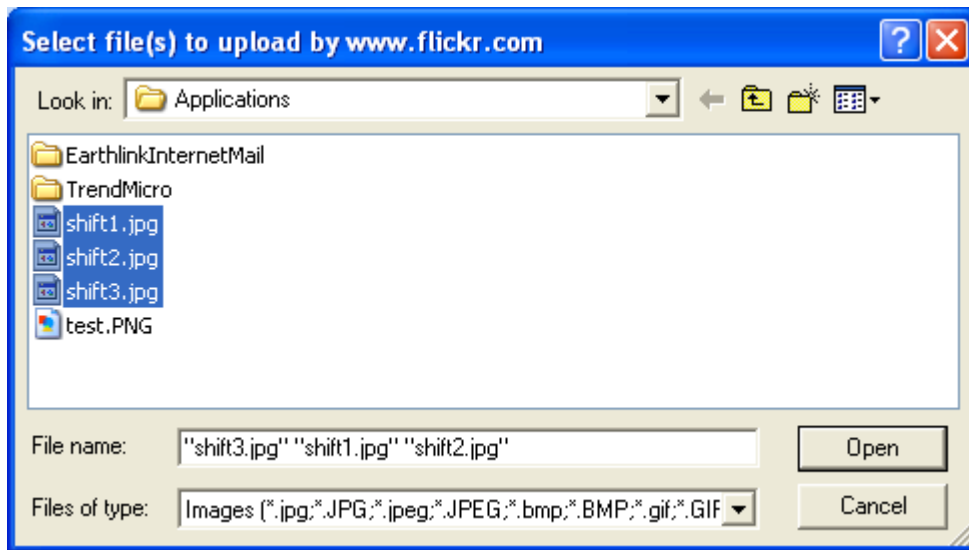
5. Click on "Upload Photos" link on the right side of the page...



5. Click on "Choose Photos" link, select photos to upload,



6. Select photos to upload, click "Open", and click "Upload" at the bottom of the page.



Upload Photos

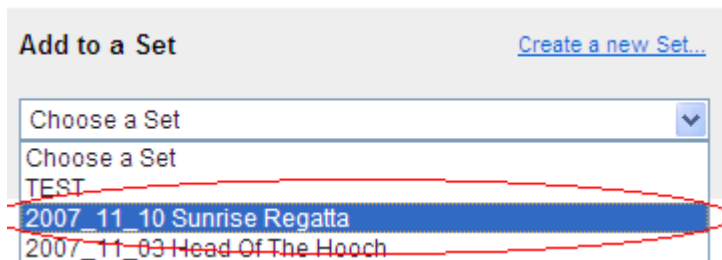
- You'll see a progress bar as the photos upload and a "Finished" message when complete. Click on "describe your photos" when complete...

Note: On average, it takes 30s per photo so it may take ~ 1 hr for 120 high resolution photos.



Finished! Next: [describe your photos](#)

- Click on the "Choose a Set" drop down and select the appropriate set. There is a set for all races and events for the 2007_2008 season. If you can't find the one you want select the "_Misc" set...



- Click on the "SAVE THIS BATCH" to complete the upload process...

SAVE THIS BATCH

Or go to your photos page